



Jane Bourgninaud
Tech Lead

Cognitive/AI Engineer
MSc
MBA in Entrepreneurship
French and Climber



Miguel Amador
Business Lead

Biomedical Engineer MSc
PhD Candidate in Health
Data and Innovation
Portuguese and Hiker



Andreu Oliver
Tech Lead

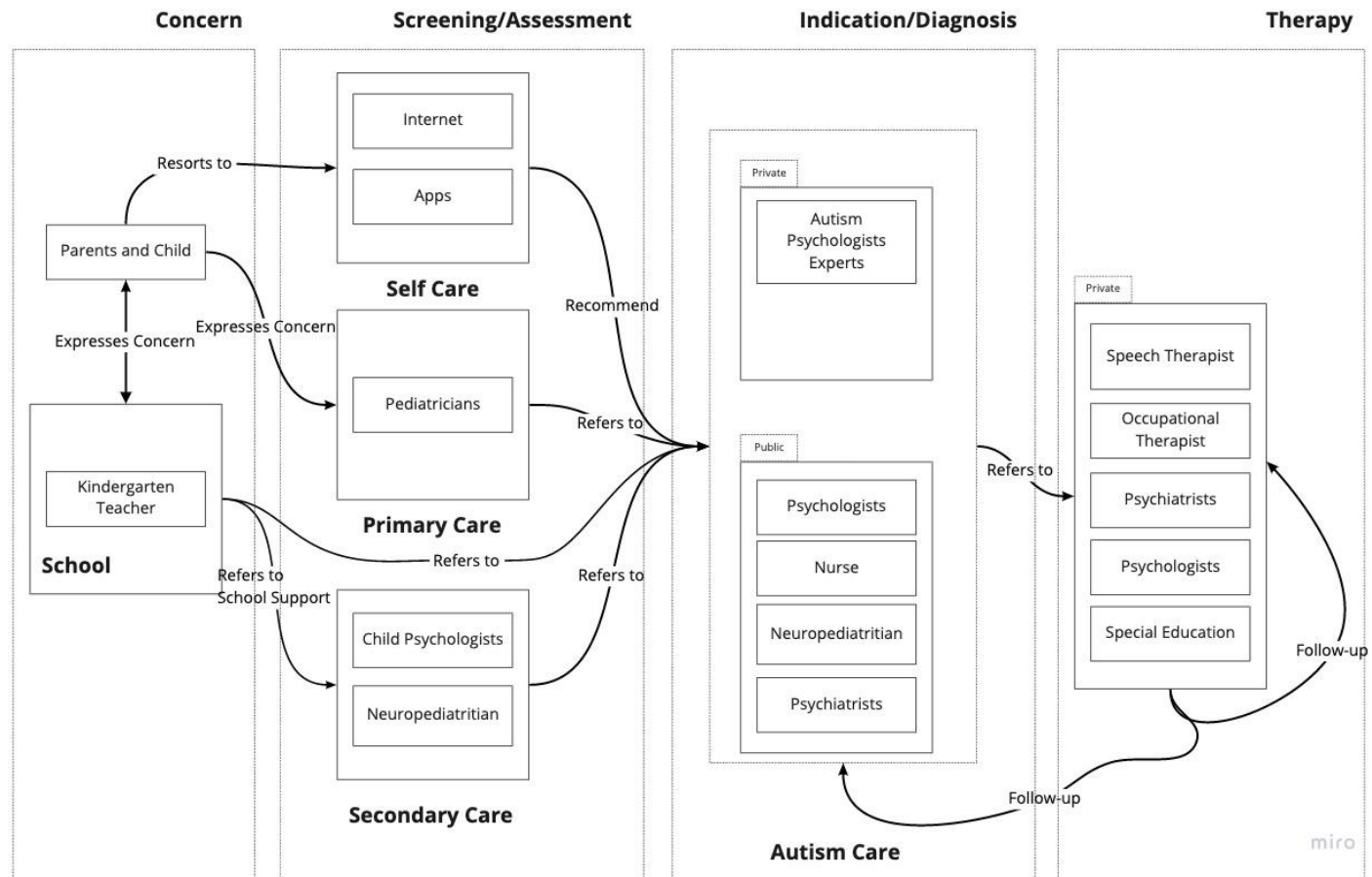
Cognitive Psychologist PhD
Eye Tracker Expert
Majorcan and Bikepacker

Objective Diagnosis of Autism Spectrum Disorder

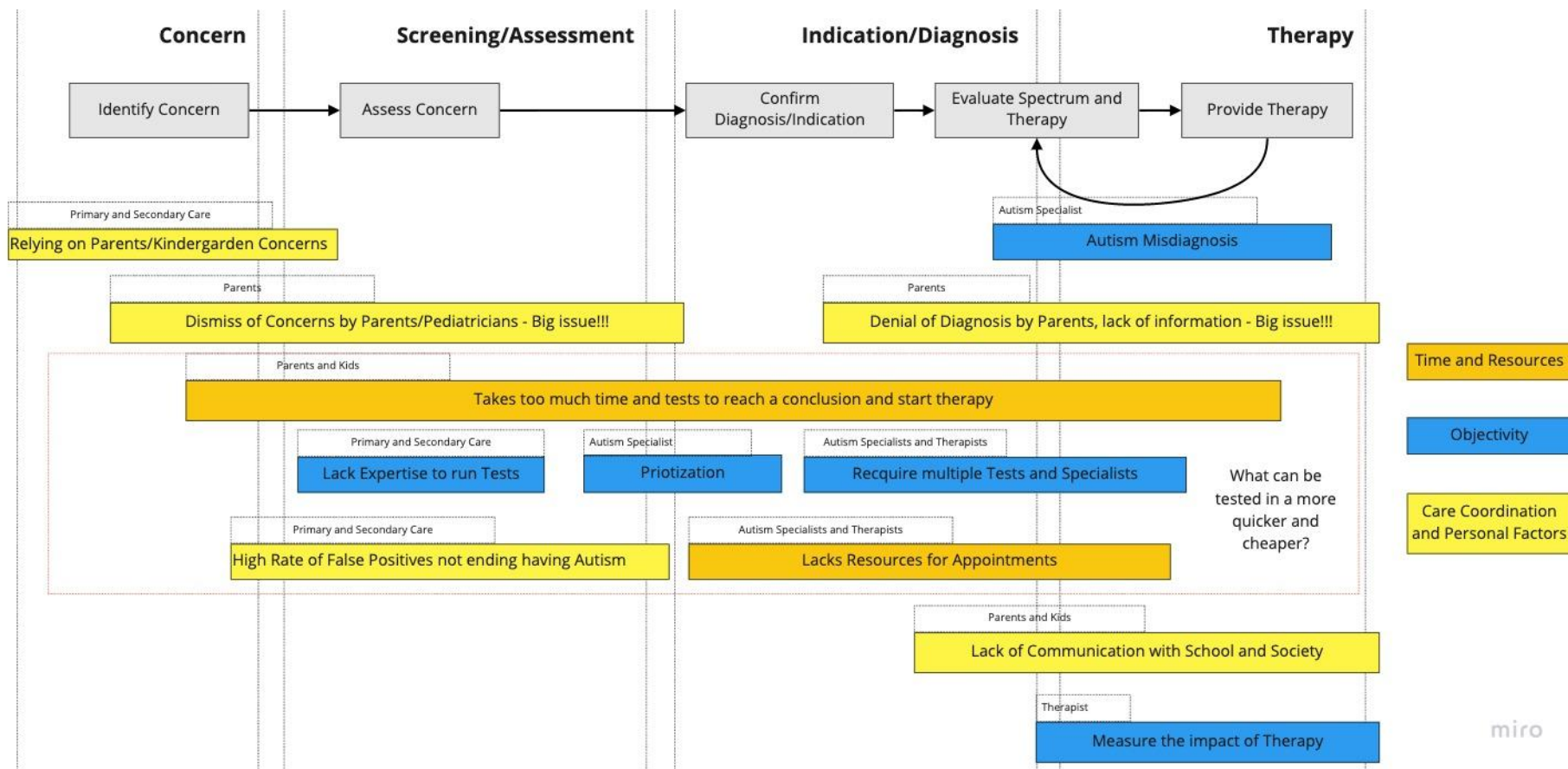
Interview Totals

| Week | In-Person | Video | Phone | Total |
|---------|-----------|-------|-------|-------|
| 13-May | 4 | 0 | 7 | 11 |
| 21-May | 5 | 0 | 7 | 12 |
| 27-May | 4 | 0 | 6 | 10 |
| 3-June | 2 | 0 | 4 | 6 |
| 10-June | 2 | 0 | 6 | 8 |
| Total | | | | 47 |

Clinical Pathway

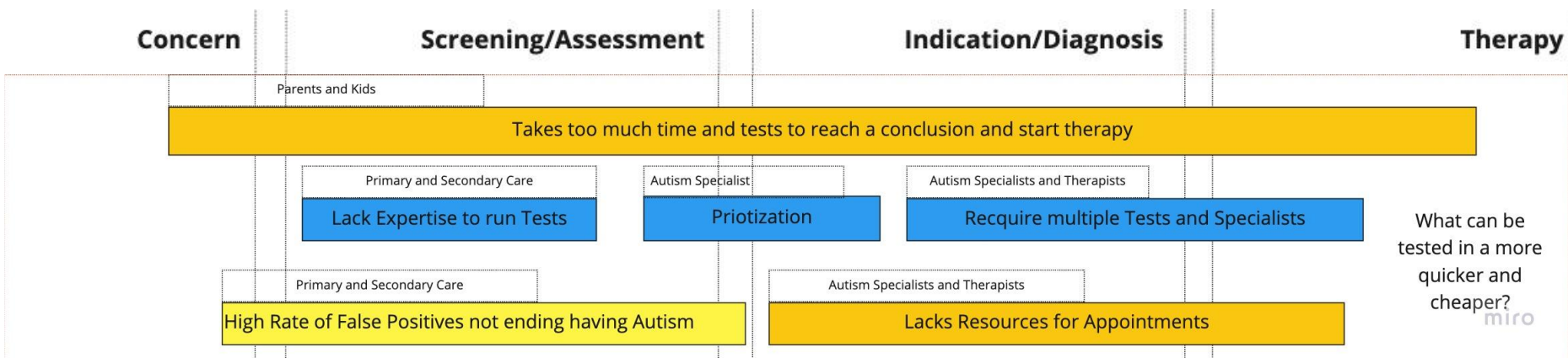


Needs Insights



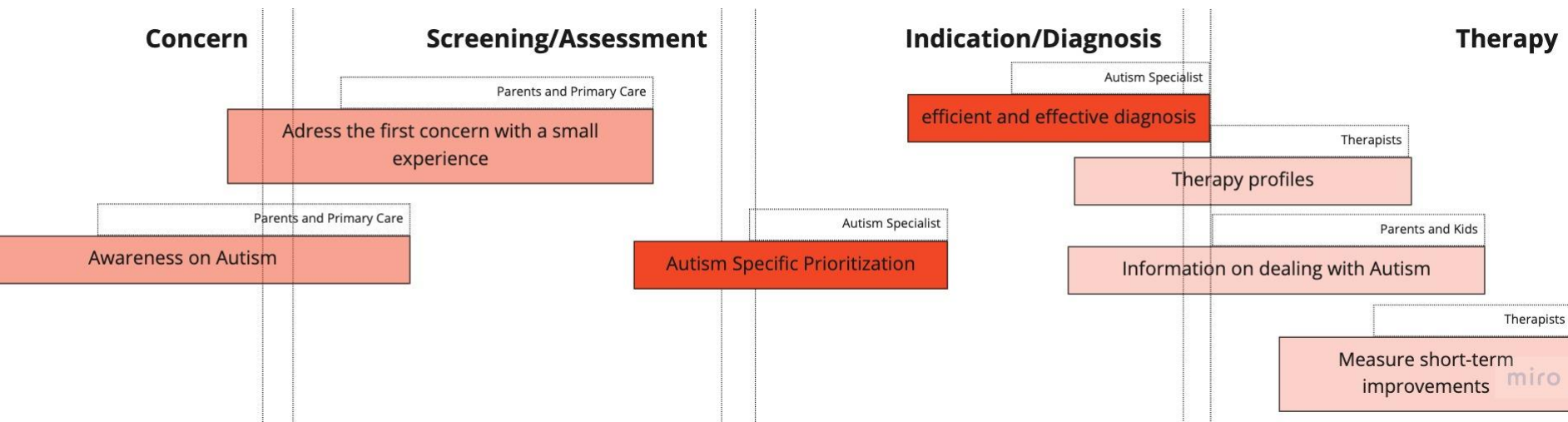
miro

Beachhead Problem



Reduce the time to diagnosis on the diagnostic pathway

Needs and Job to be Done

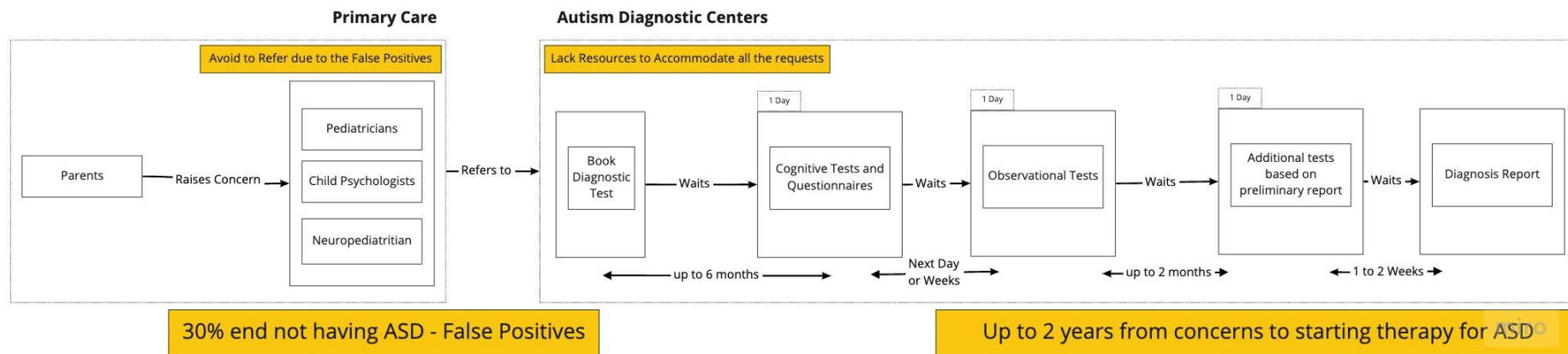


Target: ASD Diagnosis Specialists

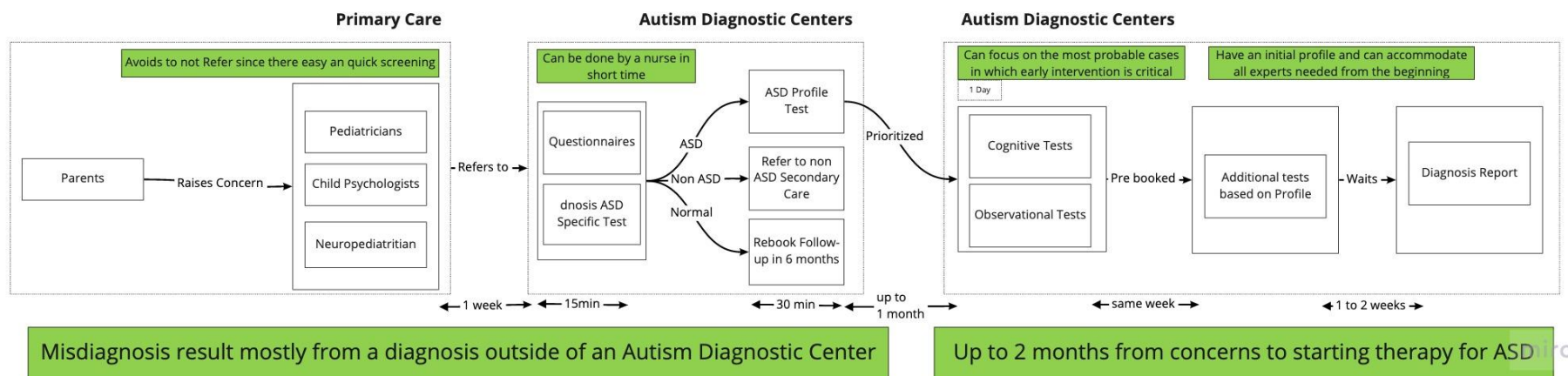
- Triage the children with ASD concerns to better allocate care and resources avoiding to miss on false negatives (specificity)
- Reduce the resources and time required for a full diagnosis

Value Proposition

without dnosis



with dnosis



Solution



diagnosis ASD Biomarker

Response

Stimuli

Launch - ASD/Non-ASD/Typical Development

Eye Tracker

Research - 93% Accuracy - 300 kids Trial

2nd Phase - ASD Profile

Mobile Game Test

Market - 94% Accuracy - 700 kids Trial

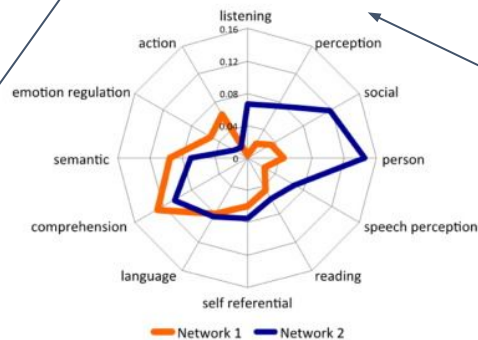
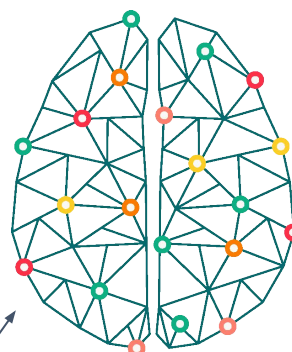
Facial Expression

Research

Biofeedback (stress)

Research

AI Classifier
from multiparametric features
based on functional Brain Model
connections network



Each assessment gives a perspective view of brain networks which enriches with more data and can be tracked and combined along the time

Video

Sound

Social Immersion

Physical Interaction

Cognitive Challenges

We go beyond existing pattern recognition from individual measurements

Regulatory Status



- No Predicate for ASD in US
- Eye tracking medical devices only provide measures
- No diagnostic support tool for ASD in US and EU
- US Class II Medical Device - Diagnostic support tool (same in EU)
- De novo Pathway - First in class, low to moderate risk
- Requires comparison with gold standard in clinical study (diagnostic reports from cognitive tests and observation)
- We have already data from partners using only eye tracking (need to review the clinical practices for the study)